

ANXA1 Ab

Cat.#: BF0046
Size: 50ul,100ul,200ul

Concn.: 1mg/ml
Source: Mouse

Mol.Wt.: 38.7kDa
Clonality: Monoclonal

| | |
|-----------------------|---|
| Application: | ELISA 1/10000, WB 1/500 - 1/2000, IHC 1/200 - 1/1000 |
| Reactivity: | Human,Mouse,Monkey |
| Purification: | Affinity-chromatography. |
| Specificity: | ANXA1 Ab detects endogenous levels of total ANXA1. |
| Immunogen: | Purified recombinant fragment of human ANXA1 expressed in E. Coli. |
| Uniprot: | P04083 |
| Description: | Annexin I belongs to a family of Ca(2+)-dependent phospholipid binding proteins which have a molecular weight of approximately 35,000 to 40,000 and are preferentially located on the cytosolic face of the plasma membrane. Annexin I protein has an apparent relative molecular mass of 40 kDa, with phospholipase A2 inhibitory activity. |
| Subcellular Location: | Nucleus. Cytoplasm. Cell projection > cilium. Basolateral cell membrane. Found in the cilium, nucleus and basolateral cell membrane of ciliated cells in the tracheal endothelium (By similarity). Found in the cytoplasm of type II pneumocytes and alveolar macrophages. |
| Tissue Specificity: | Detected in resting neutrophils (PubMed:10772777). Detected in peripheral blood T-cells (PubMed:17008549). Detected in extracellular vesicles in blood serum from patients with inflammatory bowel disease, but not in serum from healthy donors (PubMed:25664854). Detected in placenta (at protein level) (PubMed:2532504). Detected in liver. |
| Similarity: | The full-length protein can bind eight Ca ²⁺ ions via the annexin repeats. Calcium binding causes a major conformation change that modifies dimer contacts and leads to surface exposure of the N-terminal phosphorylation sites; in the absence of Ca ²⁺ , these sites are buried in the interior of the protein core. The N-terminal region becomes disordered in response to calcium-binding. The N-terminal 26 amino acids are sufficient for its extracellular functions in the regulation of inflammation and wound healing (PubMed:25664854). Acylated peptides that contain the first 26 amino acids of the mature protein can activate signaling |

via the formyl peptide receptors (PubMed:15187149, PubMed:25664854).Belongs to the annexin family.

Storage Condition and Buffer:

Mouse IgG1 in phosphate buffered saline (without Mg²⁺ and Ca²⁺), pH 7.4, 150mM NaCl, 0.02% sodium azide and 50% glycerol.Store at -20 °C.Stable for 12 months from date of receipt.

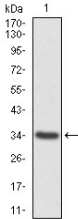


Figure 1: Western blot analysis using ANXA1 mAb against human ANXA1 recombinant protein. (Expected MW is 33.7 kDa)

IMPORTANT: For western blot, incubate membrane with diluted primary Ab in 5% w/v milk , 1X TBS, 0.1% Tween@20 at 4°C with gentle shaking, overnight.

For Research Use Only. Not for use in diagnostic and therapeutic procedures. Not for resale without express authorization.